



UCIMA

Italian Packaging Machinery Manufacturers Association



**MAIN RESULTS FROM THE
7th NATIONAL STATISTICAL SURVEY
ON THE ITALIAN PACKAGING MACHINERY MANUFACTURING INDUSTRY**

Modena, 1st July 2019

Data released by Centro Studi UCIMA



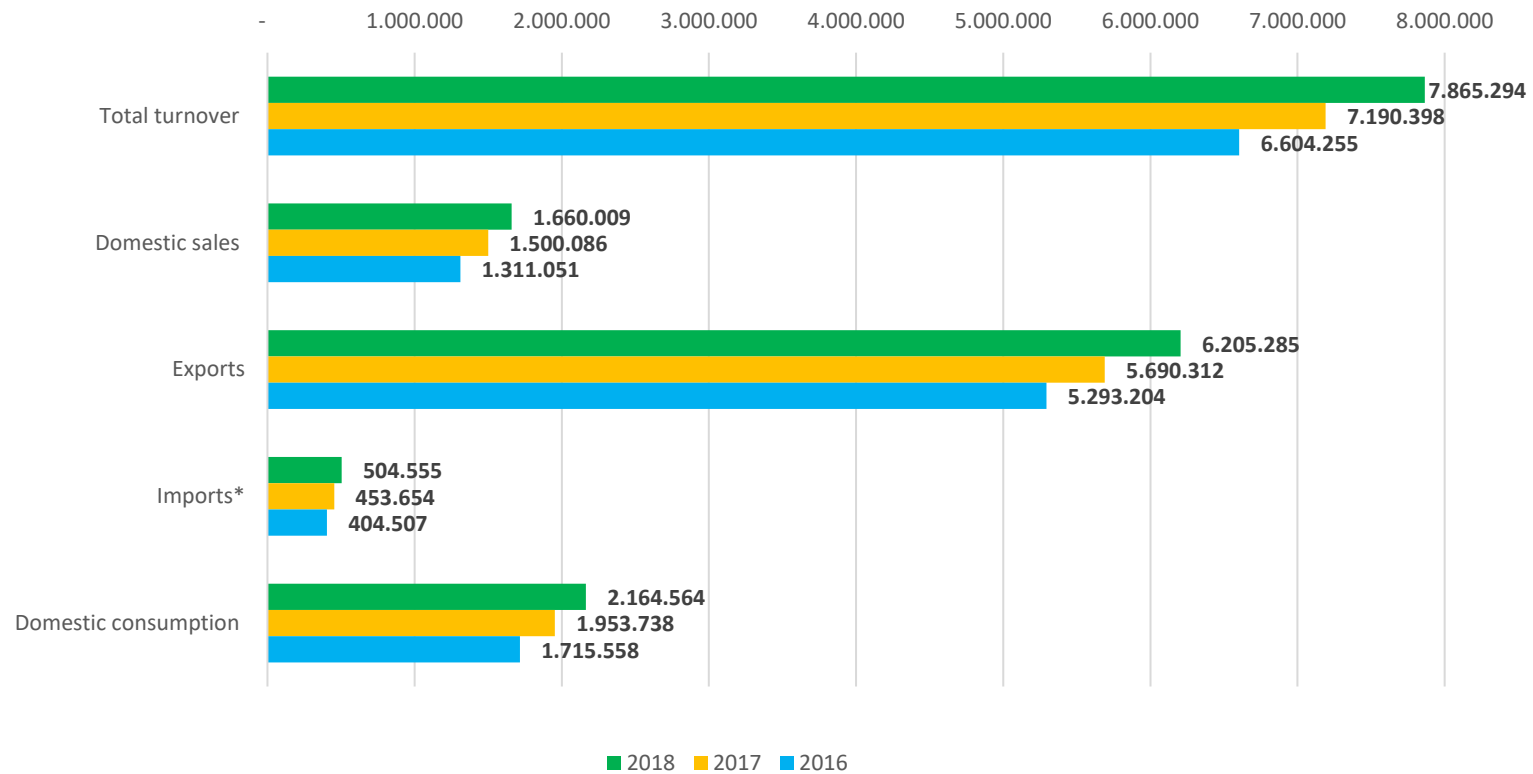
The Italian packaging machinery industry

(Values in thousand Euros)

	2016	2017	2018	Var 18/17
<i>Total turnover</i>	6.604.255	7.190.398	7.865.294	9,4%
<i>Domestic sales</i>	1.311.051	1.500.086	1.660.009	10,7%
<i>Exports</i>	5.293.204	5.690.312	6.205.285	9,0%
<i>Imports*</i>	404.507	453.654	504.555	11,2%
<i>Domestic consumption</i>	1.715.558	1.953.738	2.164.564	10,8%
<i>Trade balance</i>	4.888.697	5.236.657	5.700.730	8,9%
<i>Number of companies</i>	601	634	631	-0,5%
<i>Number of employees</i>	29.644	32.227	32.626	1,2%
<i>Exports/Total turnover</i>	80,1%	79,1%	78,9%	
<i>Import/Domestic consumption</i>	23,6%	23,2%	23,3%	

Key indicators of industry – period 2016-2018

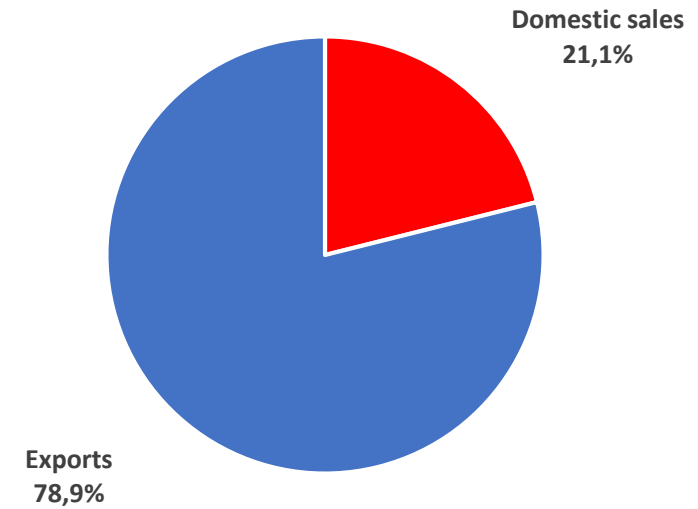
(Values in thousand Euros)



Turnover analysis - period 2016-2018

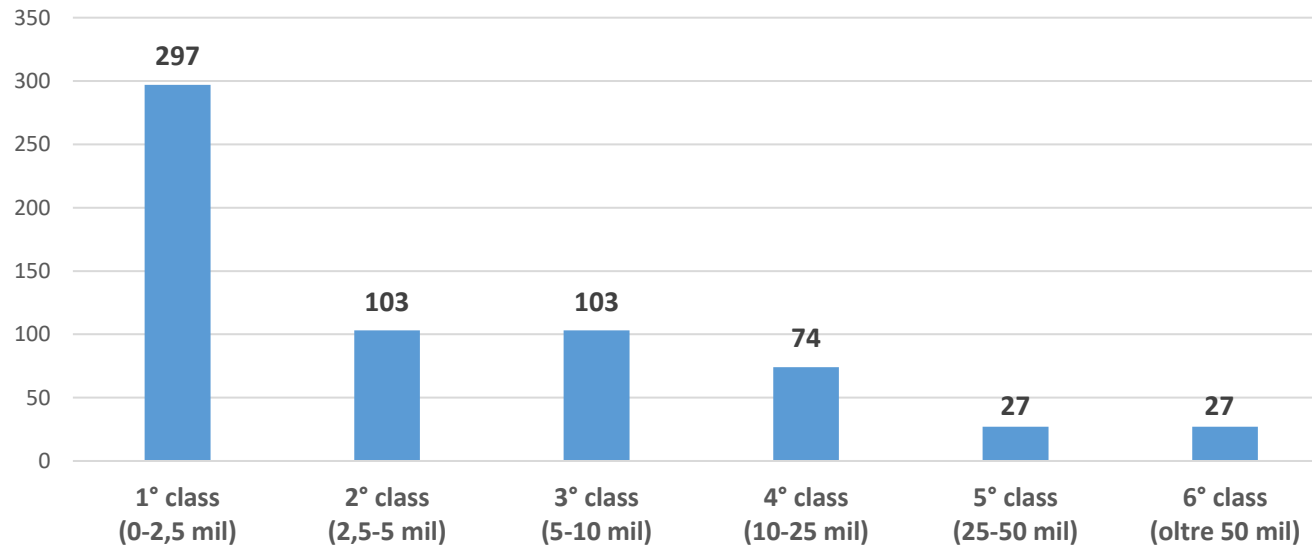
(Values in thousand Euros)

	<i>Domestic sales</i>	<i>Exports</i>	<i>Total turnover</i>
2016	1.311.051	5.293.204	6.604.255
	19,9%	80,1%	100,0%
2017	1.500.086	5.690.312	7.190.398
	20,9%	79,1%	100,0%
2018	1.660.008	6.205.285	7.865.293
	21.1%	78.9%	100,0%

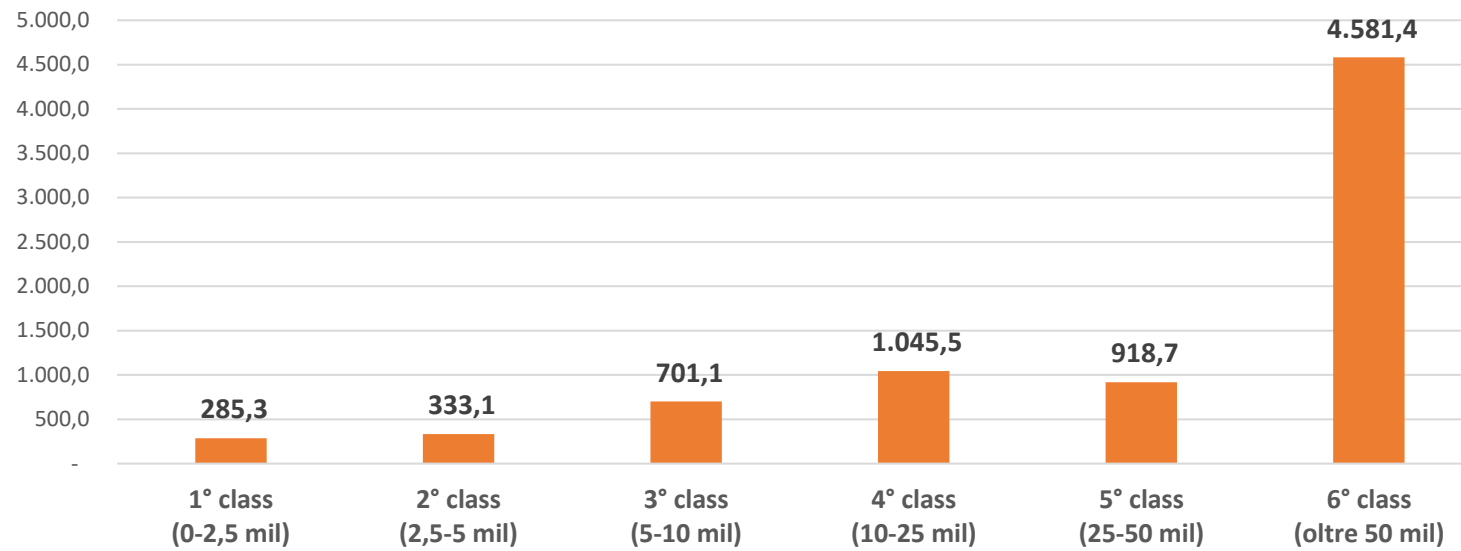


Number of companies by size in 2018

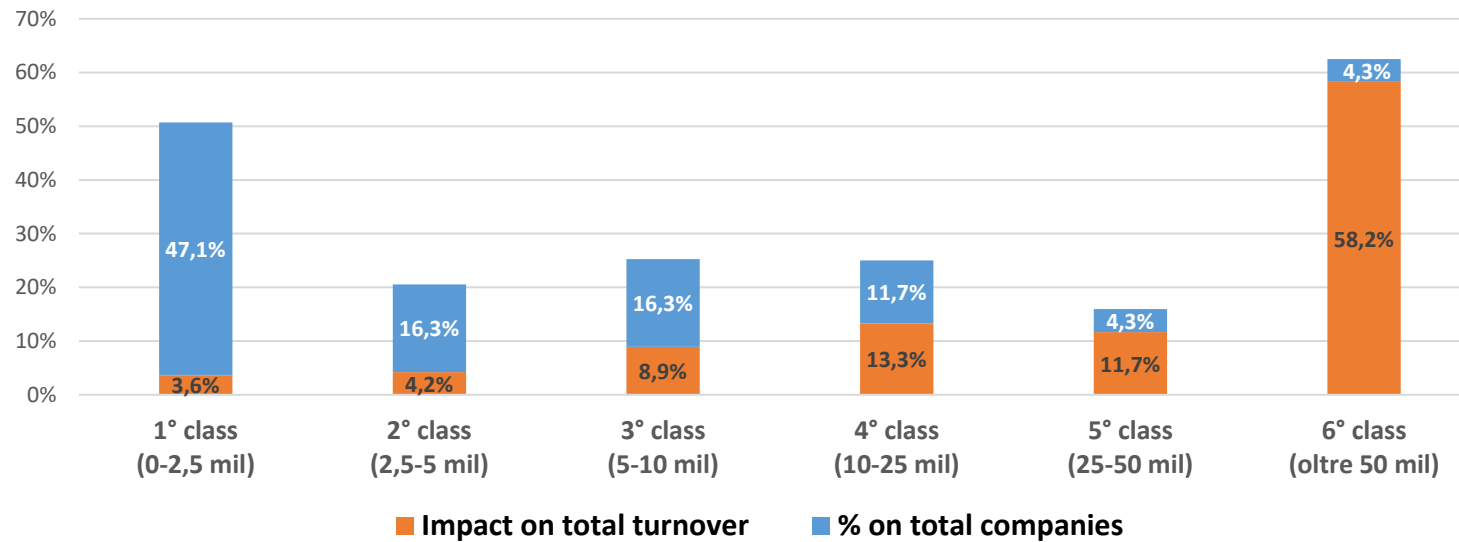
	1st class (0-2,5 mil)	2nd class (2,5-5 mil)	3rd class (5-10 mil)	4th class (10-25 mil)	5th class (25-50 mil)	6th class (over 50 mil)	TOTAL
Number of companies	297	103	103	74	27	27	631
% on total	47,1%	16,3%	16,3%	11,7%	4,3%	4,3%	100,0%



Turnover analysis by size in 2018

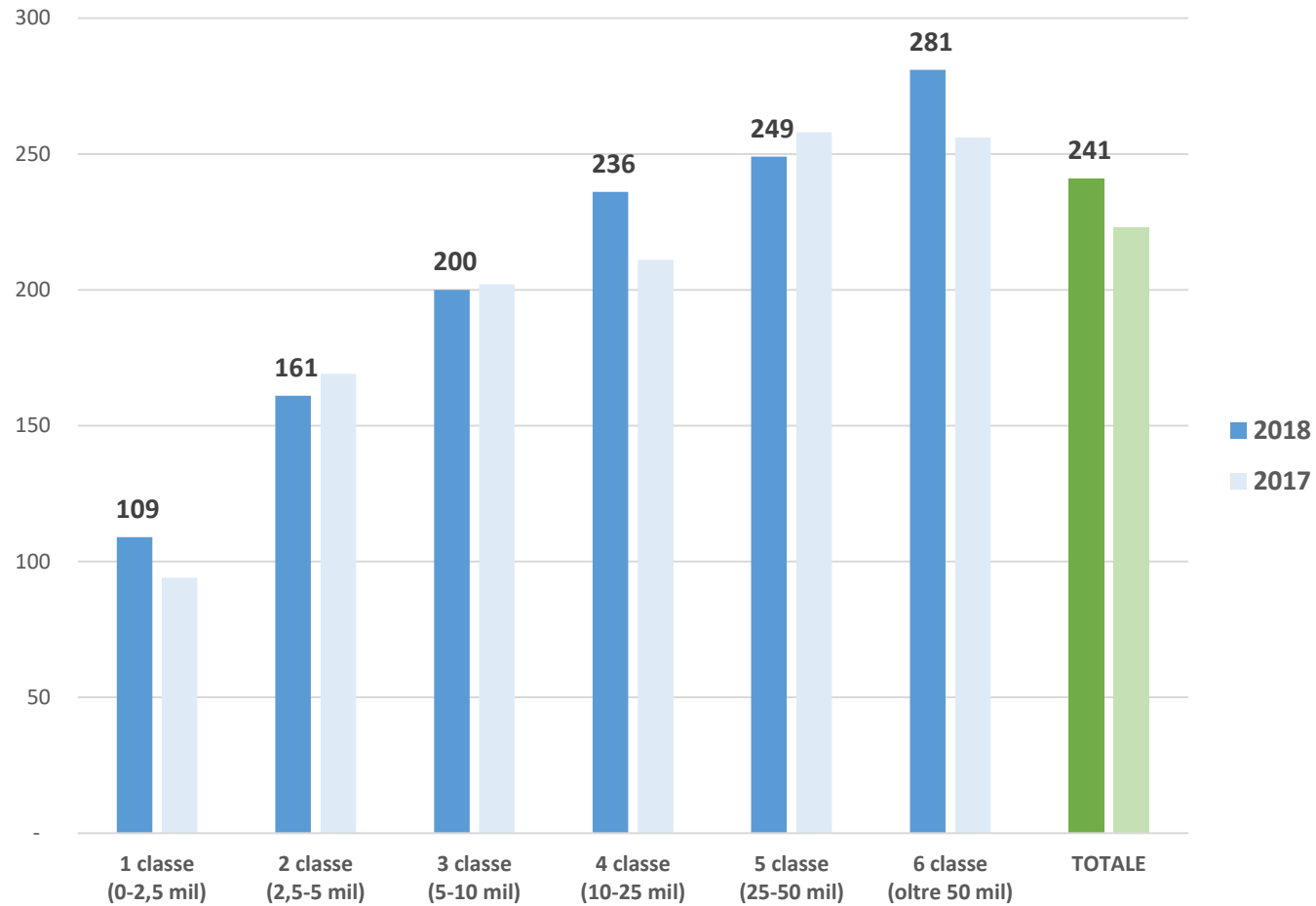


Relationship between the numerical weight of each size class and their impact on total turnover in 2018

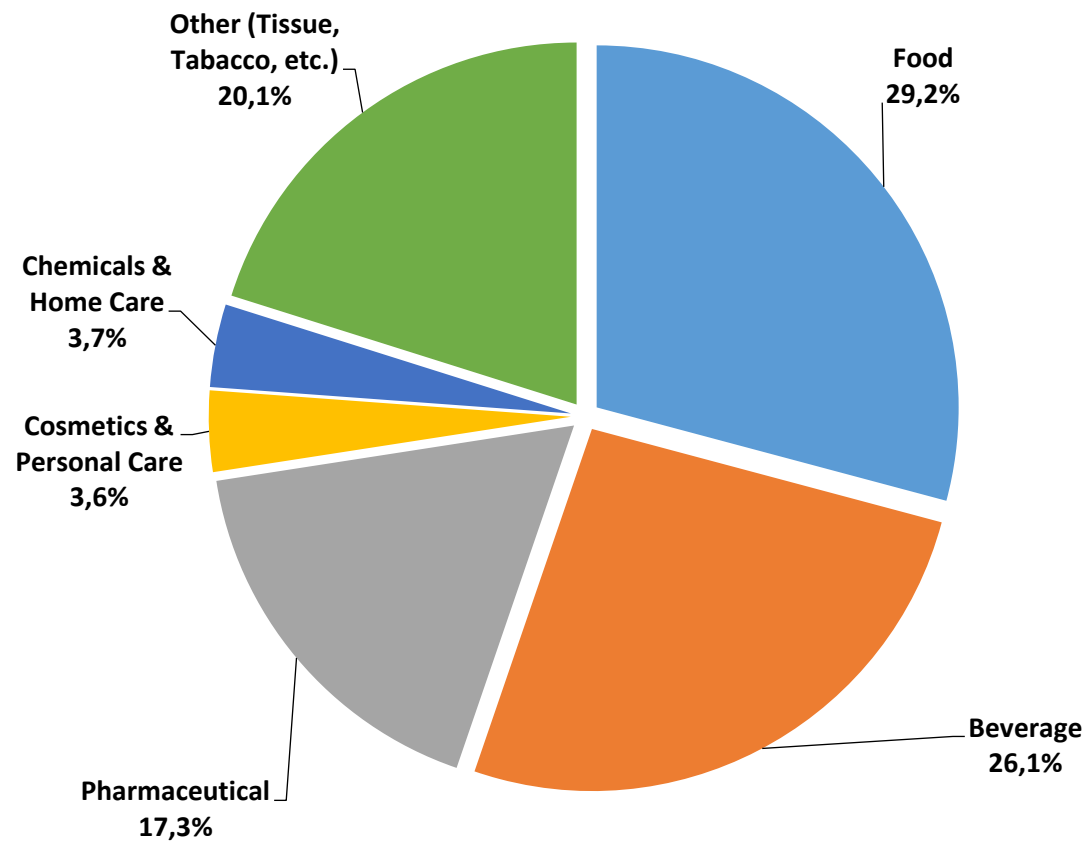


Average turnover per employee in 2018

(Values in thousand Euros)



Turnover breakdown by “Client Sectors” in 2018



Turnover breakdown by “Client Sectors” - period 2016-2018

(Values in thousand Euros)

	2016	2017	2018	Var. 2018/2017
Food	1.969.809	2.174.967	2.293.002	5,4%
<i>domestic turnover</i>	491.275	556.272	636.725	14,5%
Beverage	1.825.668	1.861.369	2.053.439	10,3%
<i>domestic turnover</i>	275.962	318.487	367.347	15,3%
Pharmaceutical	1.113.877	1.160.074	1.360.092	17,2%
<i>domestic turnover</i>	217.781	228.227	287.291	25,9%
Cosmetics & Personal Care	270.885	272.166	284.114	4,4%
<i>domestic turnover</i>	71.356	71.809	72.443	0,9%
Chemicals & Home Care	267.876	257.733	290.951	12,9%
<i>domestic turnover</i>	61.970	64.722	73.719	13,9%
Other (Tissue, Tobacco, etc.)	1.156.141	1.464.089	1.583.697	8,2%
<i>domestic turnover</i>	192.707	260.569	222.483	-14,6%
TOTAL	6.604.255	7.190.398	7.865.294	9,4%
<i>domestic turnover</i>	1.311.051	1.500.085	1.660.009	10,7%



**The next edition of the survey will be available
in June 2020**